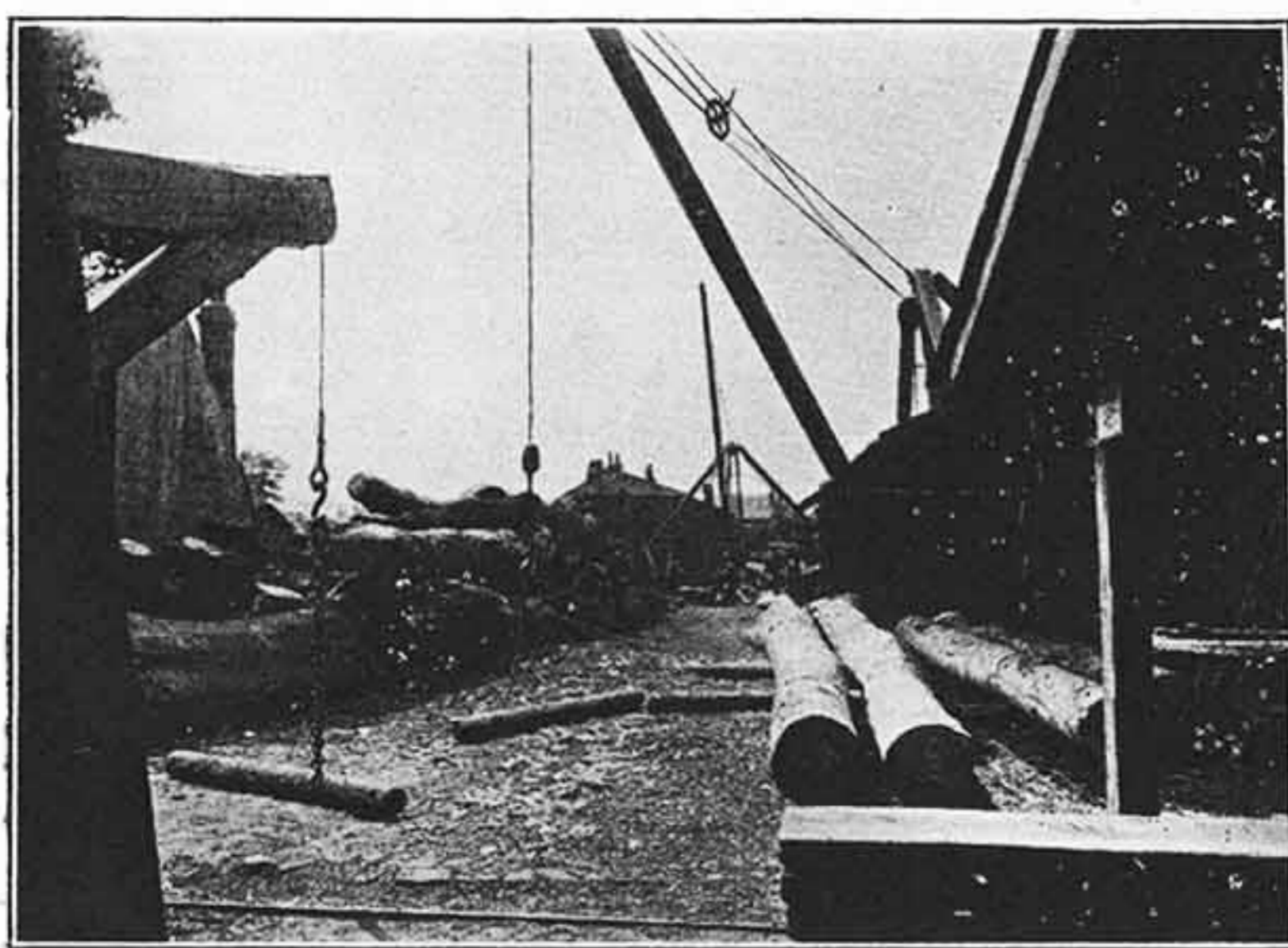


ILLUSTRATED PRICE LIST. FENCING



B. HORTON & SON,
· TIMBER · MERCHANTS ·
LEWISHAM · AND · WESTERHAM,
LONDON, S.E. KENT.



A VIEW OF OUR LEWISHAM YARD.



A VIEW OF OUR WESTERHAM YARD.

Oak Park Paled Fencing with gravel plank (as illustrated).

- 4ft. high with 4 × 4 posts, 2 rails, 6 × 1½ gravel plank at 4/9 per yard.
- 4ft. high with 5 × 4 posts, 2 rails, 6 × 1½ gravel plank at 4/11 per yard.
- 5ft. high with 5 × 4 posts, 3 rails, 6 × 1½ gravel plank at 6/7 per yard.
- 5ft. high with 6 × 4 posts, 3 rails, 6 × 1½ gravel plank at 6/9 per yard.
- 6ft. high with 5 × 4 posts, 3 rails, 6 × 1½ gravel plank at 7/7 per yard.
- 6ft. high with 6 × 4 posts, 3 rails, 6 × 1½ gravel plank at 7/10 per yard.

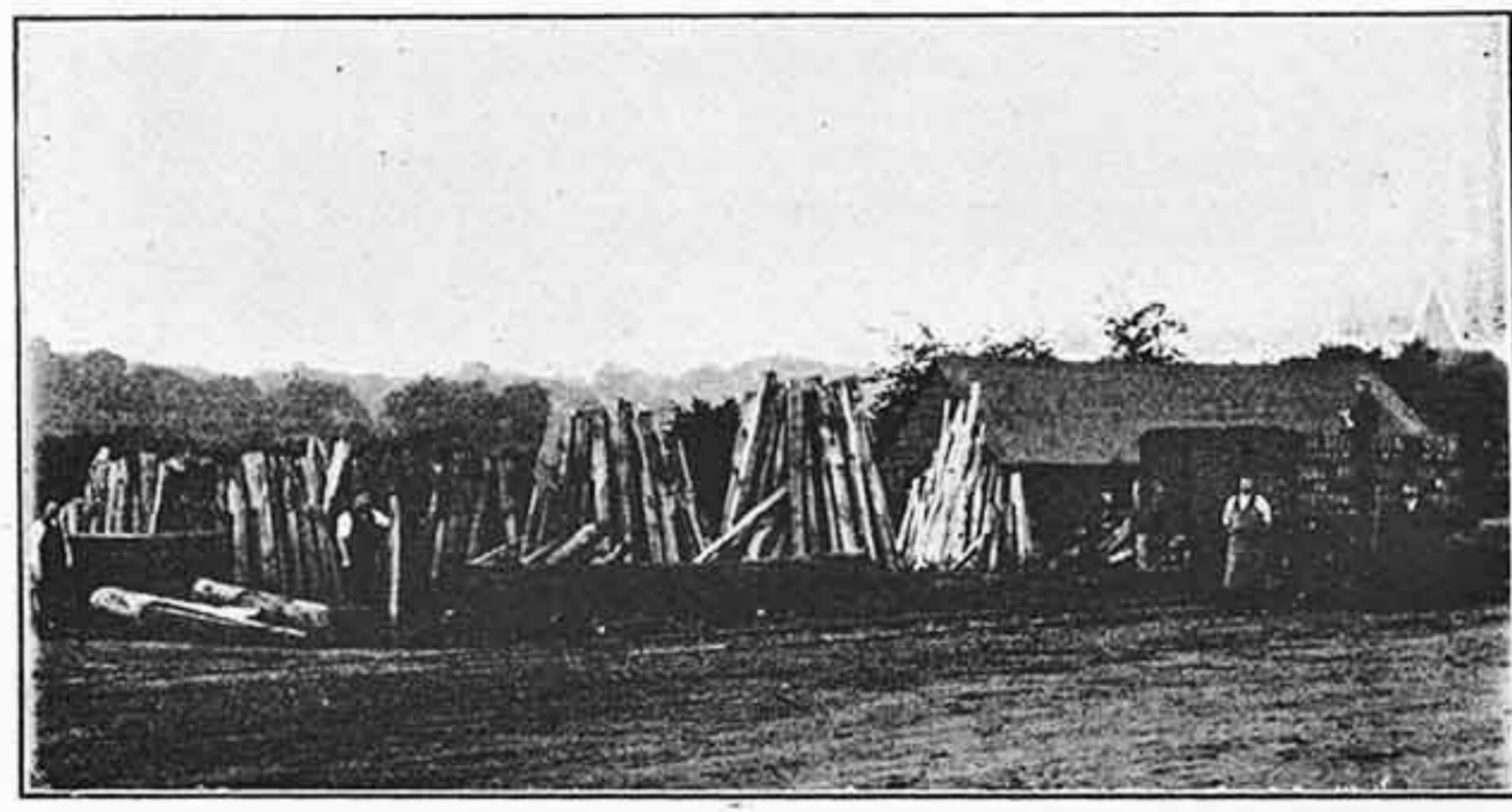
Intermediate heights at proportionate price.

The width of gravel plank and length of pales can be varied to suit requirements.

Galvanized nails are used throughout.

Sawn Jarrah Pales, about ½ to ¾ × 3 can be substituted on this fence if preferred.

For further particulars see "General Remarks."



LOADING SIDING, WESTERHAM YARD.

Ornamental Fencing with counter rail and capping.

- 4ft. high with 4 × 4 posts, 2 rails, and counter rail and capping at 4/11 per yard.
- 4ft. high with 5 × 4 posts, 2 rails, and counter rail and capping at 5/2 per yard.
- 5ft. high with 5 × 4 posts, 3 rails, and counter rail and capping at 6/9 per yard.
- 5ft. high with 6 × 4 posts, 3 rails, and counter rail and capping at 7/- per yard.
- 6ft. high with 5 × 4 posts, 3 rails, and counter rail and capping at 8/- per yard.
- 6ft. high with 6 × 4 posts, 3 rails, and counter rail and capping at 8/4 per yard.

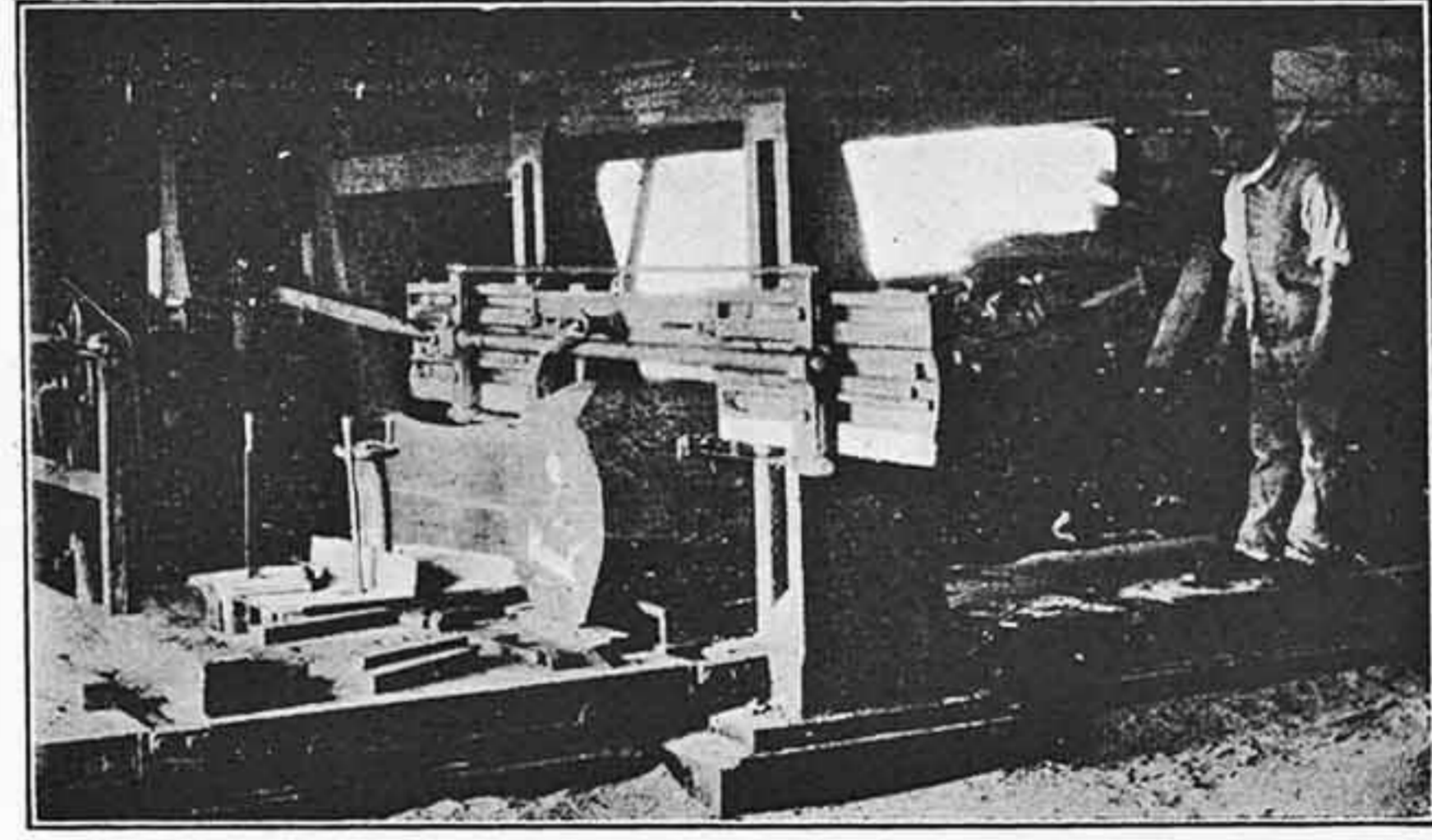
Intermediate heights at proportionate price.

Galvanized nails throughout.

This fence can be supplied without counter rail and capping, and with gravel plank if preferred.

Sawn Jarrah Pales, about ½ to ¾ × 3, can be substituted on this fence if preferred.

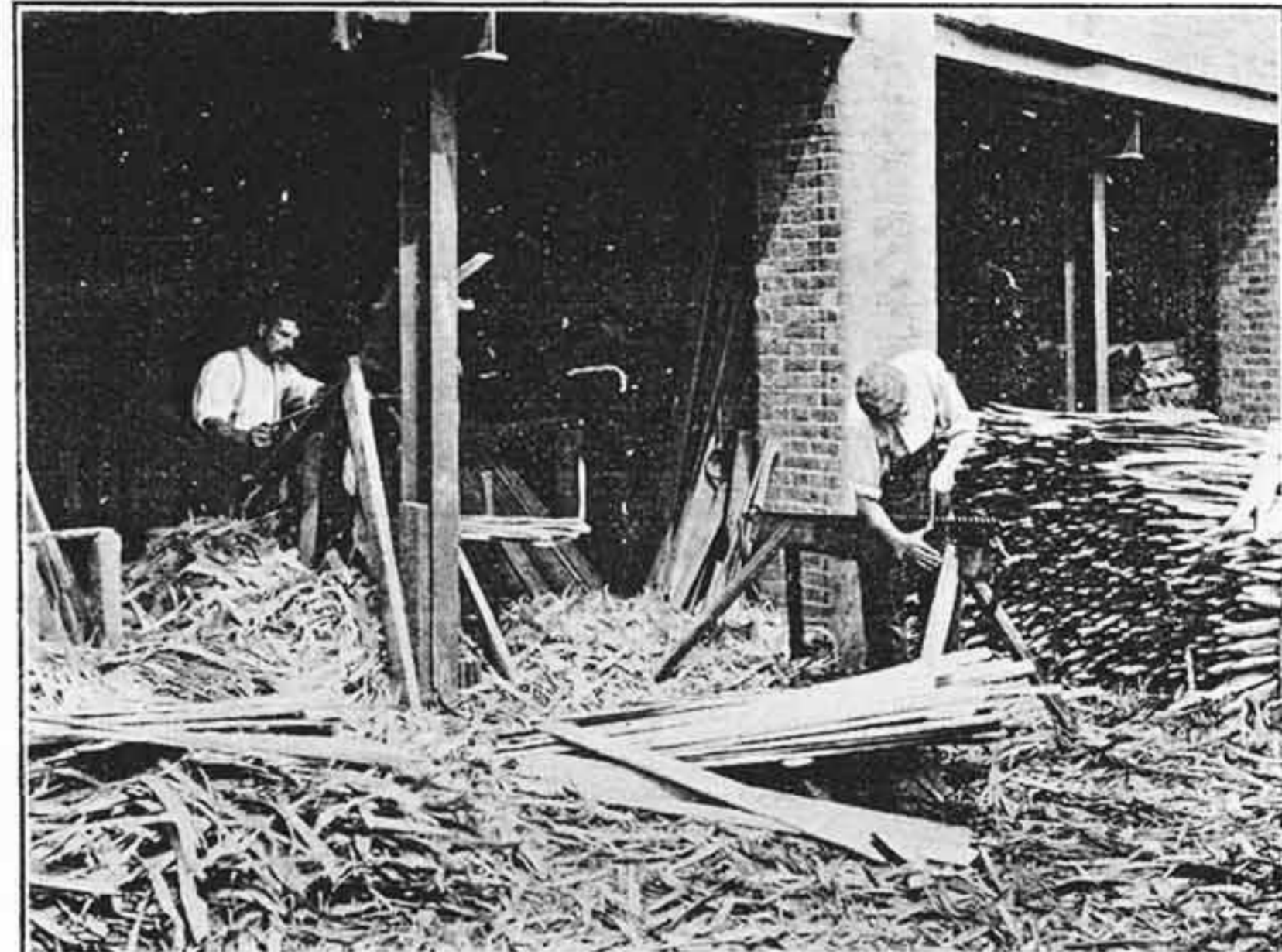
For further particulars see "General Remarks."



HORIZONTAL SAWING MACHINE, WESTERHAM MILL.



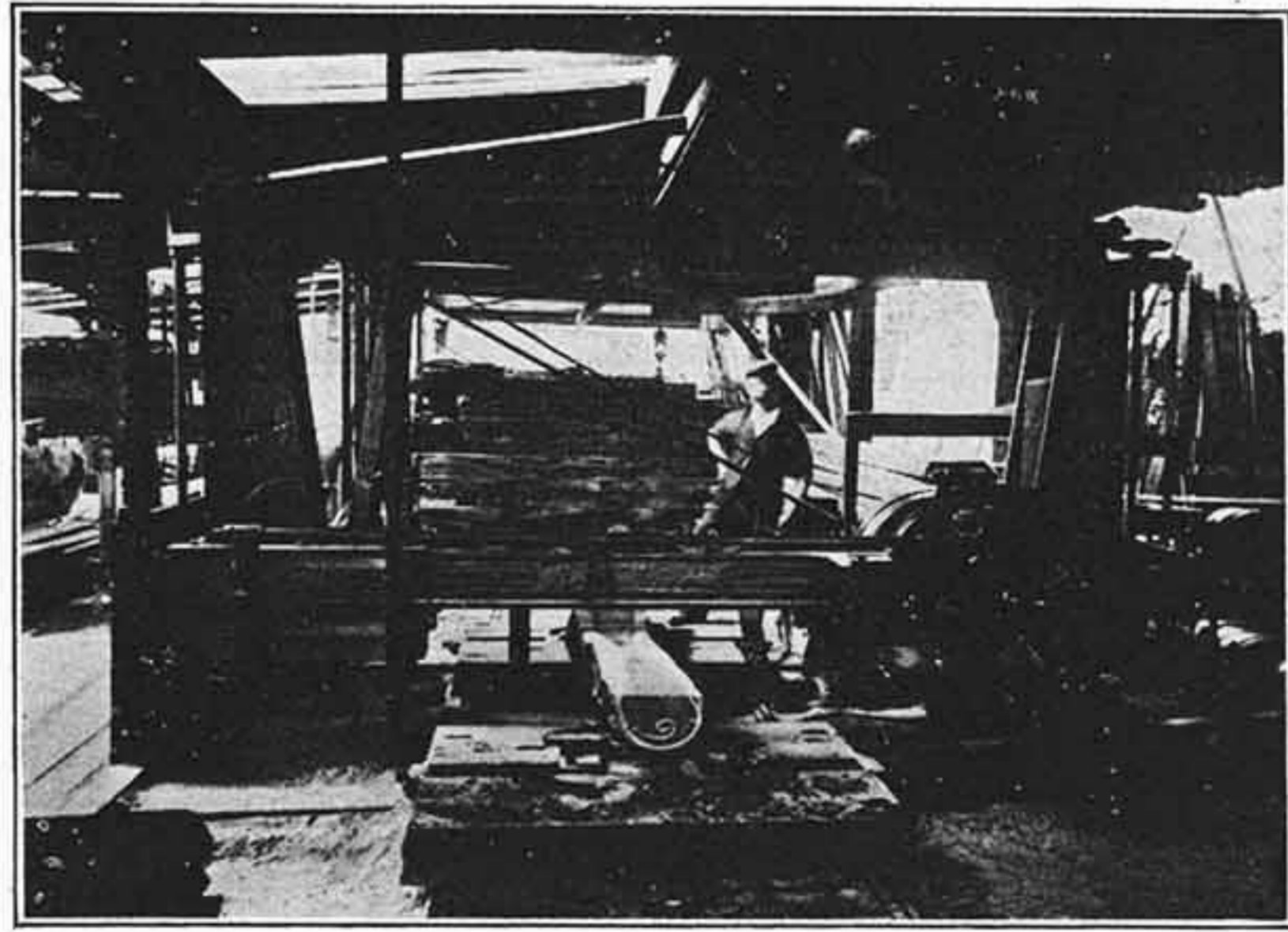
CLEAVING OAK PALES.



SHAVING PALES.



WESTERHAM YARD.—Outside the Mill.—Sorting Orders.



VIEW OF MILL, LEWISHAM YARD.

Oak and Fir Space Pale Fencing (as illustrated).

- 4ft. high with 4 × 4 oak posts, 2 fir rails, 2½ × ¾ fir pales at 2/3 per yard.
- 4ft. high with 5 × 4 oak posts, 2 fir rails, 2½ × ¾ fir pales at 2/5 per yard.
- 5ft. high with 5 × 4 oak posts, 3 fir rails, 2½ × ¾ fir pales at 3/4 per yard.
- 5ft. high with 6 × 4 oak posts, 3 fir rails, 2½ × ¾ fir pales at 3/6 per yard.
- 6ft. high with 5 × 4 oak posts, 3 fir rails, 2½ × ¾ fir pales at 4/1 per yard.
- 6ft. high with 6 × 4 oak posts, 3 fir rails, 2½ × ¾ fir pales at 4/4 per yard.

Intermediate heights at proportionate price.

This fence can be constructed in all fir or all oak if desired.

A coating of Tar, Sideroleum or other wood preservative on the fir fences is recommended.

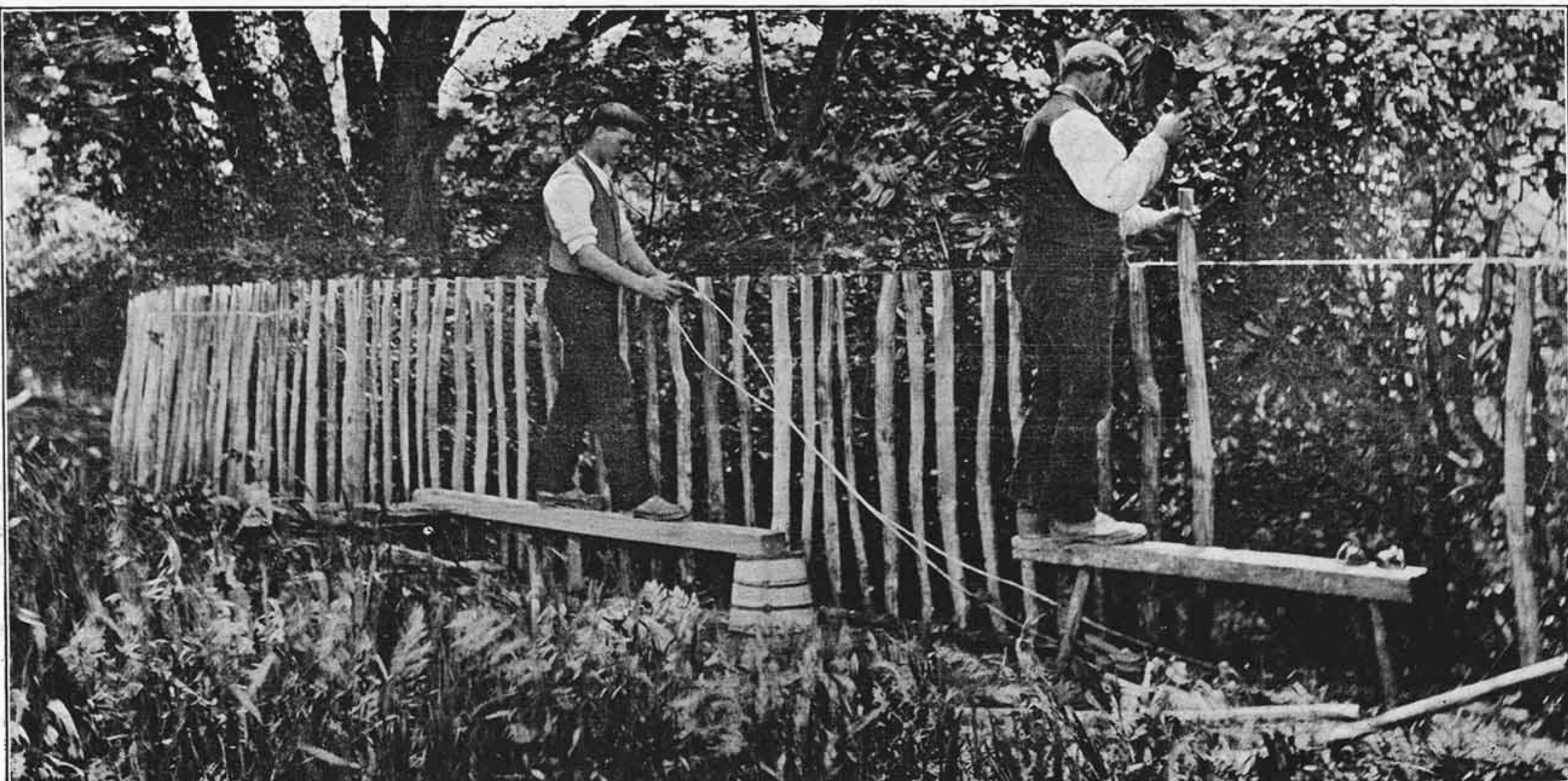
3 × 1 pales or Arris pales can be substituted at slightly increased cost.

For further particulars see "General Remarks."



TIMBER SHEDS—WESTERHAM YARD.

Method of Fixing.



This Fence can be made in any height up to 7ft., and with stakes, any distance apart. The feet of the stakes are dipped in Sideroleum.